



Registered Under Section 2(F) & 12(B) of UGC Act

ACHARYA PANTSHRI GRINDH MUNI NAAM SAHEB

GOVT. PG COLLEGE, KAWARDHA (C.G.)

आचार्य पंथ श्री ग्रन्थ मुनि नाम साहेब शासकीय सनातकोत्तर महाविद्यालय, कवर्धा (छ.ग.)

Affiliated to Hemchand Yadav Vishwavidyalaya , Durg (C.G.)



Student Feedback

Conclusion and suggestions 2022-23

In the Feedback analysis for the year 2022-23 out of 248 students response. Our Analysis team menial that.

- 1- The Students demands to increase lab facility including practical Instruments. And near and clean lab.
- 2- Students demands to conduct extra class.
- 3- To enhance he no of teaching faculty.
- 4- Some Students demanded to select a day for imp suggestions.
- 5- Some students suggested to stand P.G. facility in sume dept. like Biotech, Psychics.
- 6- Library Facility must be enhanced.
- 7- Placement cell must be strengthen.

Action Taken

- 1- Some instruments were demanded by the dept. like in botany LAMIMAR AIR Flow was brought to the lab.
- 2- All the faculties here instructed to onenet extra class for completing the syllabus on time.
- 3- To enhances the no of teaching faculties faculty from self Annecy/yan behaviors appointed.
- 4- For imp suggestions SIP was erylanced for the interaction b/w students any faculties.

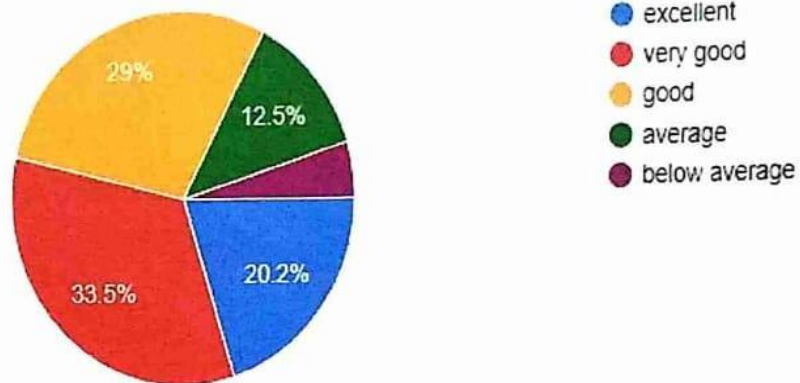
IQAC INCHARGE
APSGMNS GOVT PG COLLEGE
KAWARDHA

PRINCIPAL
APSGMNS GOVT PG COLLEGE
KAWARDHA

Feedback of Students Session 2022-23

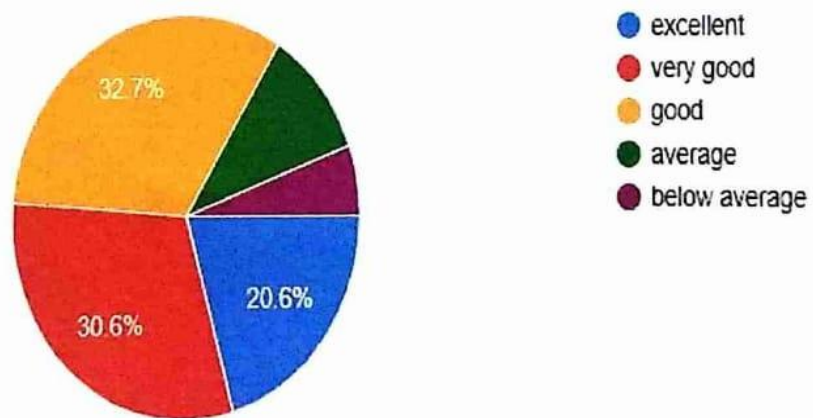
1. Has the teacher covered the entire syllabus as prescribed by the university?

248 responses



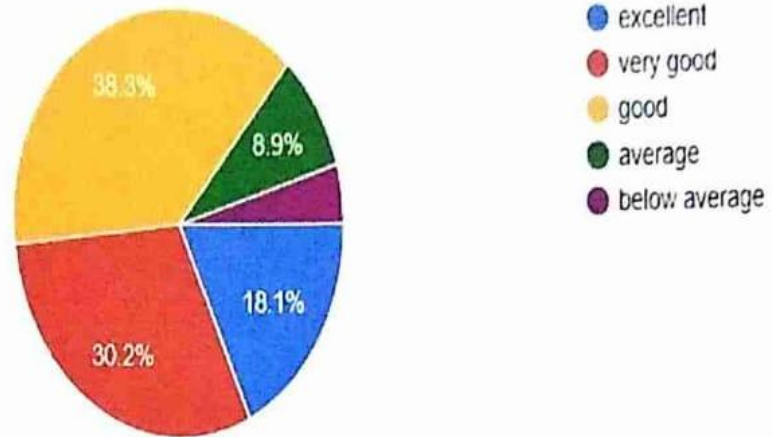
2. Has the teacher covered relevant topics beyond syllabus

248 responses



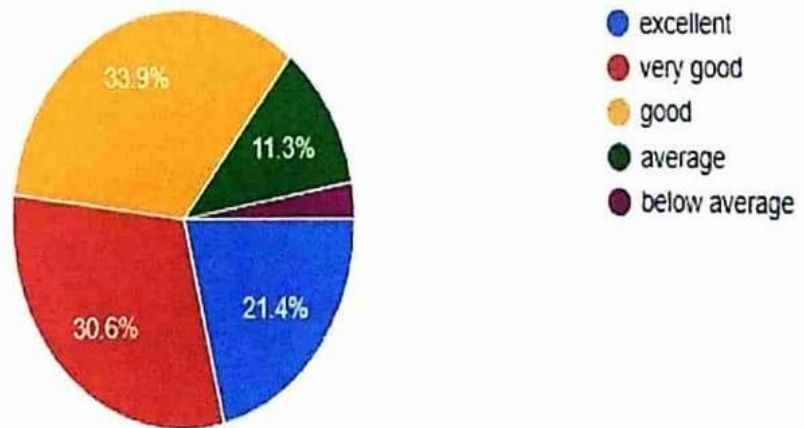
3. Effectiveness of teacher in terms of technical content

248 responses



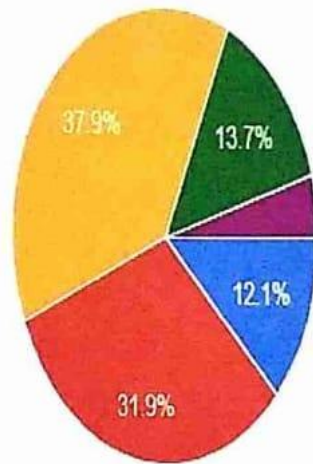
4. Communication Skills

248 responses



5. Use of non-print teaching aids

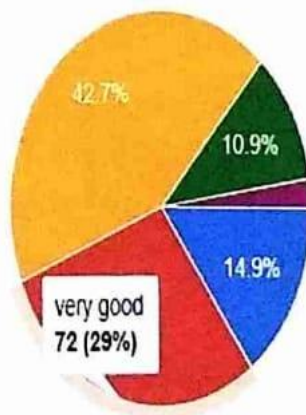
248 responses



- excellent
- very good
- good
- average
- below average

6. Overall effectiveness

248 responses

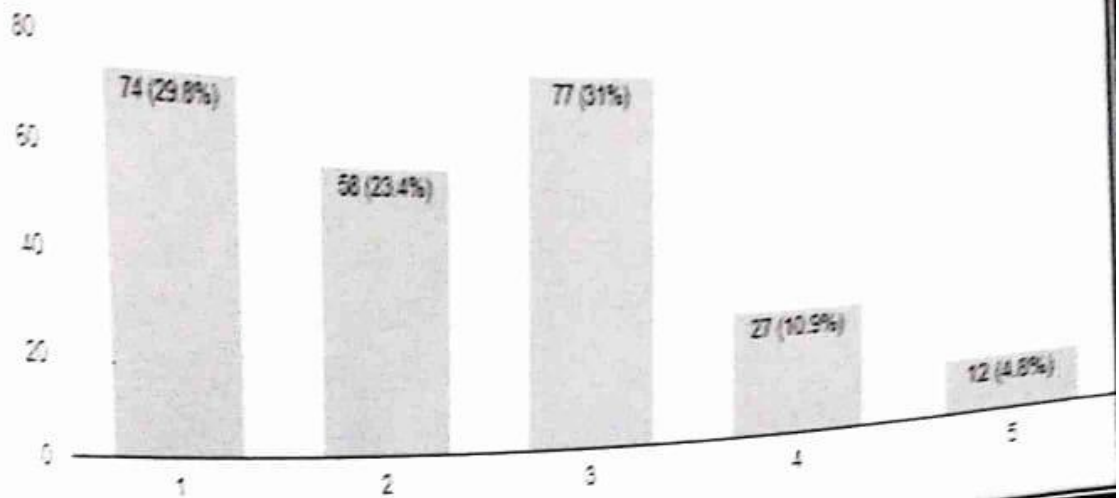


- excellent
- very good
- good
- average
- below average

7. How do you rate the contents of the curricular (where 1 is highest rank and 5 is lowest rank)?

 Copy

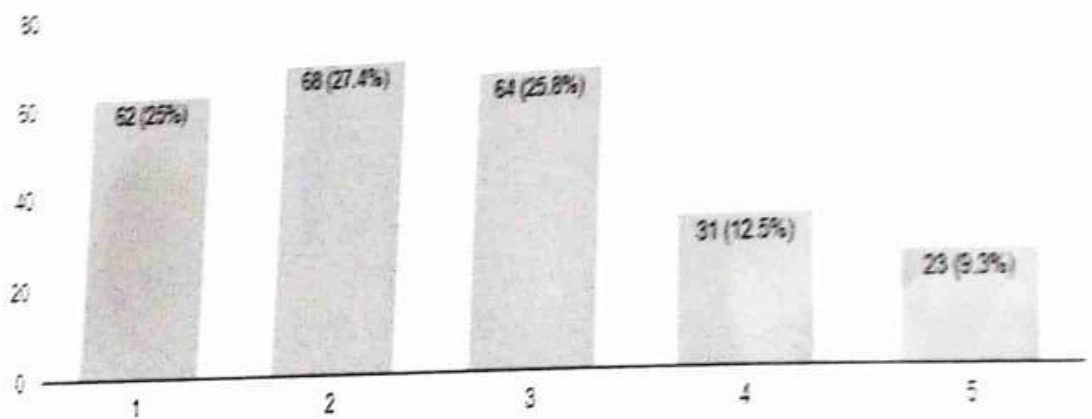
248 responses




8. How do you rate lab facilities, if applicable? (where 1 is highest rank and 5 is lowest rank)?

 Copy

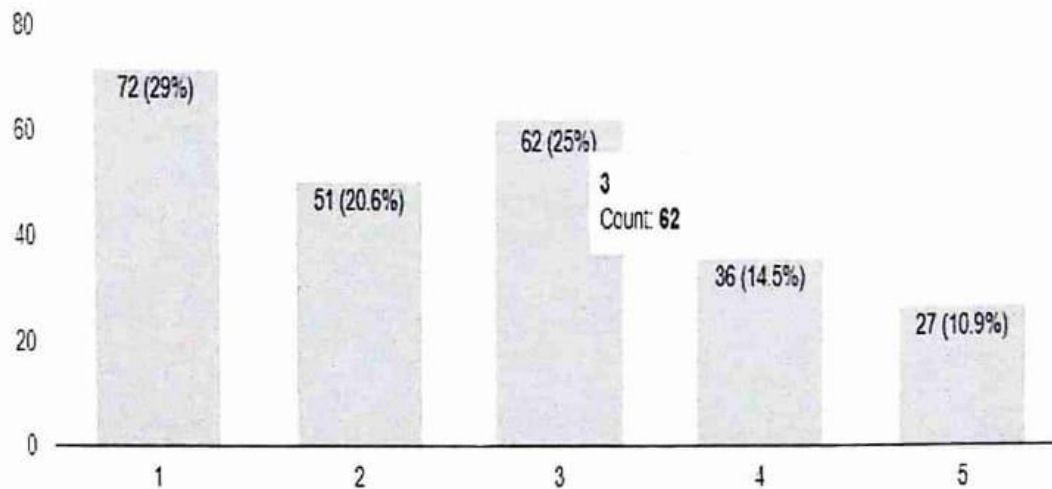
248 responses



9. How do you rate the library facility (where 1 is highest rank and 5 is lowest rank)?

 Copy

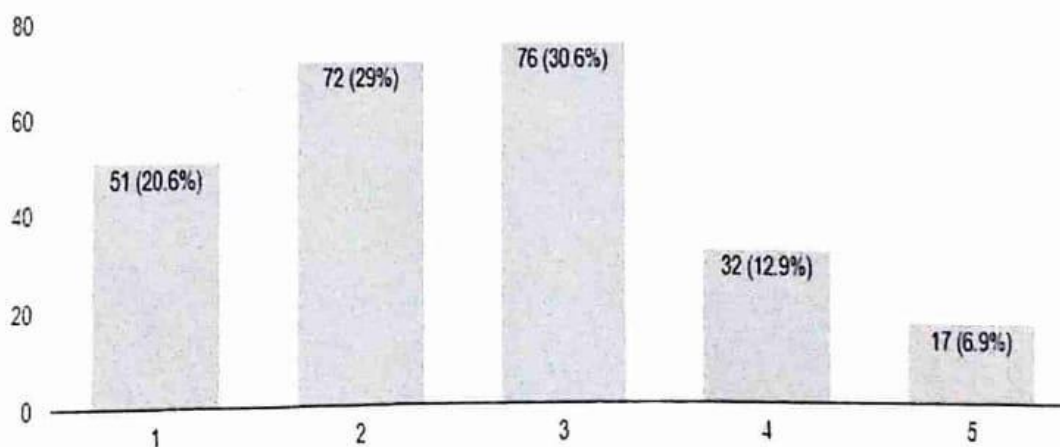
248 responses



10. How do you rate infrastructure facility (where 1 is highest rank and 5 is lowest rank)?

 Copy

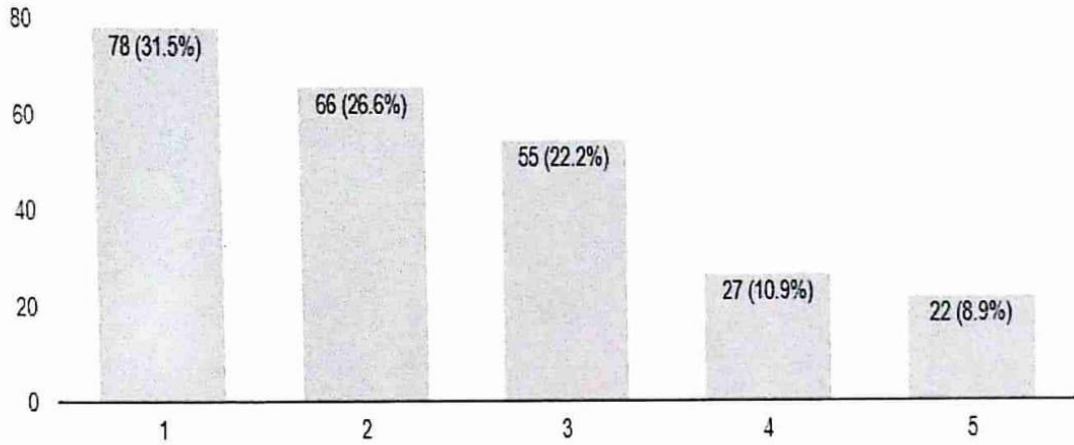
248 responses



11. How do you rate co-curricular activity -NCC/NSS/Seminar (where 1 is highest rank and 5 is lowest rank)?

Copy

248 responses



IQAC INCHARGE
APSGMNS GOVT PG COLLEGE
KAWARDHA

PRINCIPAL
APSGMNS GOVT PG COLLEGE
KAWARDHA